

What's that odor?

The sewer pipe is being replaced with Cured-In-Place Pipe (CIPP)

What is CIPP?

CIPP is a method used to replace damaged or deteriorated sewer pipe without digging up the existing pipe or disrupting roads, driveways, sidewalks, or landscaping. Since 1971, CIPP has been used to safely reduce construction time, cost and disruptions in sewer service, while minimizing the impact on homes, businesses, traffic, and the environment.

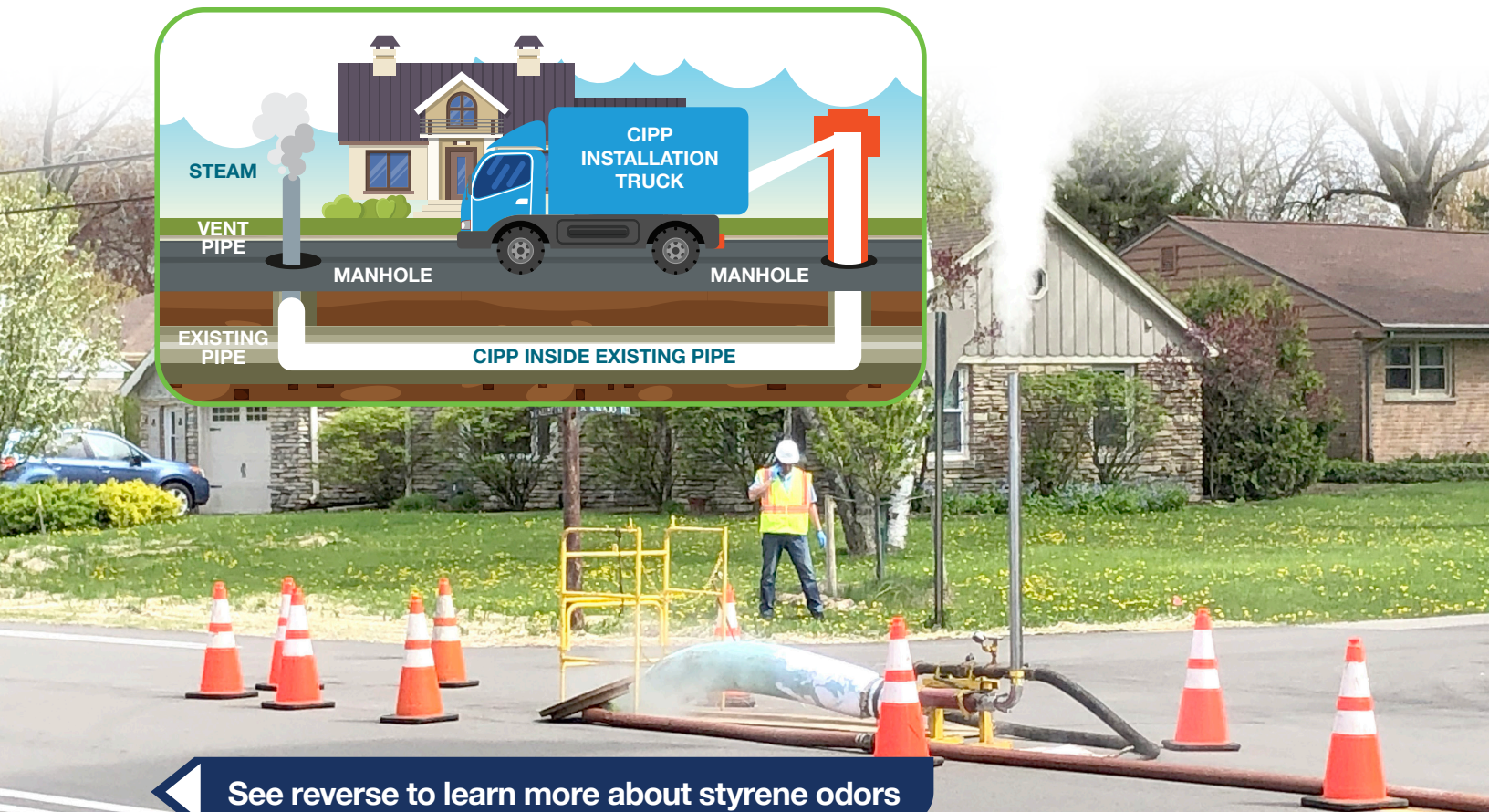
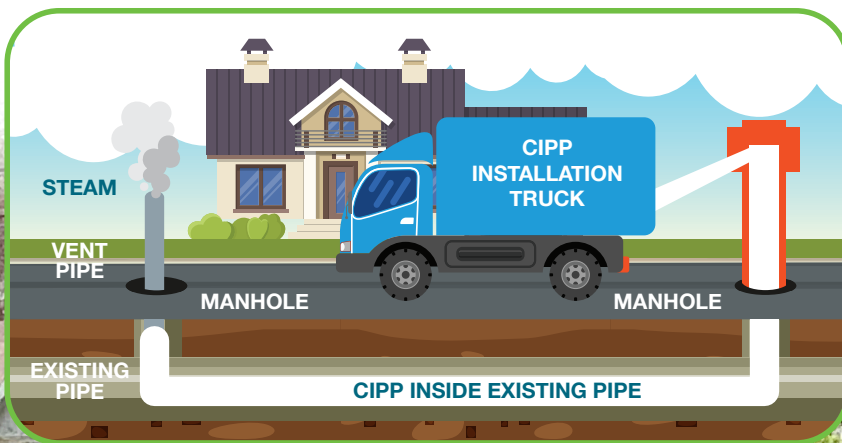
CIPP Installation Process

The process involves installing a resin-saturated felt tube into an existing sewer pipe. Once in place, the tube is inflated to fit tightly inside the original pipe and cured or hardened to create a new plastic pipe within the old pipe. During the process, a steam cloud coming from a 6-foot (minimum) vent stack at a manhole may be visible in the air and will dissipate quickly when the process is complete.

What is that odor and why can I smell it inside my house?

On occasion, there may be a "glue like" odor during the curing process that arises from the styrene component in the resin used in CIPP. Once the CIPP is fully cured or hardened, the odor will be eliminated.

If you detect an odor in your home, it is likely entering through the pipe that connects your home to the public sewer main. A "U" shaped pipe called a P-trap is located at all drains/plumbing fixtures and is designed to keep sewer gas and other vapors out of your home or building. Floor drains/plumbing fixtures may dry out at the P-trap and allow sewer vapors to enter your home or building.

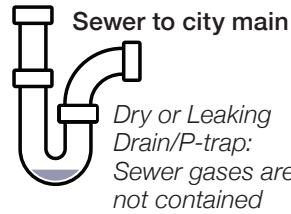


See reverse to learn more about styrene odors

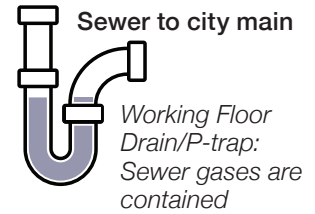
What can I do to prevent or eliminate the odor?

Pour ½ gallon of water in all plumbing fixtures and drains to fill your P-traps prior to the start of the project. If you smell the odor in your home, ventilate the area by opening windows and doors. Adding more water to the P-traps and using a fan may help eliminate the smell faster. If the odor persists after ventilating, contact the project superintendent.

Floor Drain



Floor Drain

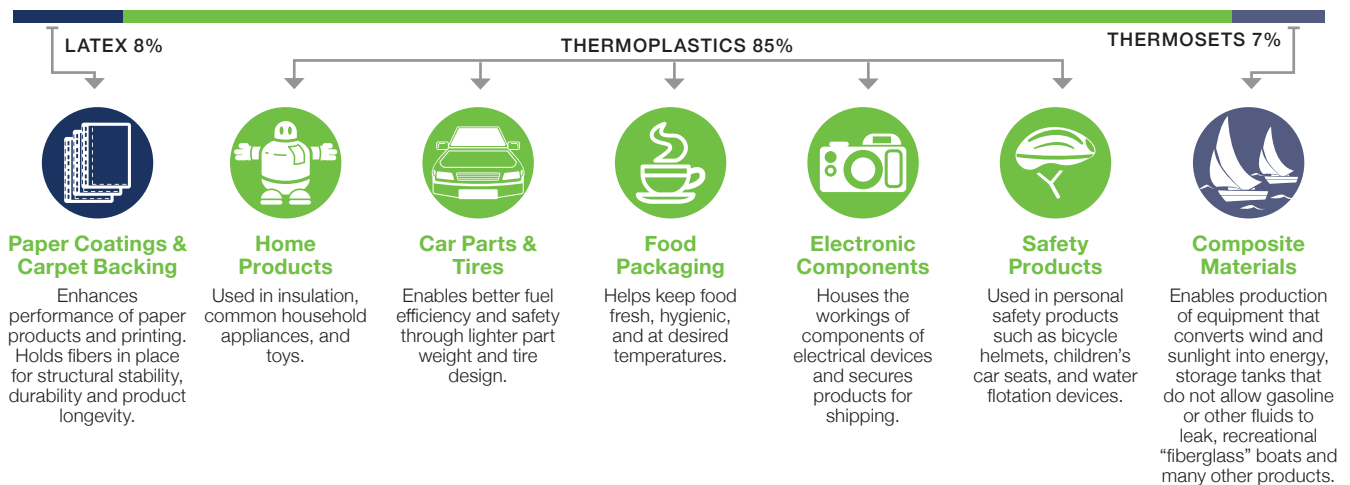


What is Styrene?

Styrene is a clear, colorless liquid that is synthesized for commercial use from petroleum and natural gas by-products. Styrene also occurs naturally in the environment and is an inherent component in small concentrations of many commonly consumed foods and beverages, such as coffee, strawberries, and cinnamon.

Styrene is frequently used for thermoplastics, and also latex and thermosets

Source: Styrene Information and Research Center



Why is the odor so strong?

Styrene has a very intense, distinctive odor and is detectable by the human nose at very low concentrations (0.1 parts per million). The presence of a styrene odor does not necessarily indicate a dangerous level.

Question: Is the odor harmful to my family and me?

For the general population in normal circumstances, measured environmental styrene concentrations from CIPP in the air are at levels too low to cause health effects. However, short-term exposure may cause eye irritation, headache, and discomfort. The EPA guideline for such an airborne concentration would list this as an Acute Exposure Guideline Level -1. EPA defines this as the airborne concentration of a substance above which it is predicted that the general population, including susceptible individuals, could experience notable discomfort, irritation, or certain asymptomatic, non-sensory effects. In most cases, however, the effects are reversible upon leaving the area of exposure.

To learn more about:

- **CIPP** visit NASSCO.org
- **Styrene** visit styrene.org, nassco.org, youknowstyrene.org, epa.gov





Hoerr Construction, Inc.
1416 County Road 200 N
P.O. Box 65
Goodfield, IL 61742

Office: (309) 691-6653
Fax: (309) 508-7990

Q: What is that Smell?

R: You are smelling **styrene**; it is a major component of the resin used to make sewer liners like the one we are installing installed in your area. We are using a process called Cured-In-Place-Pipe or CIPP. Styrene is used in thousands of products including Styrofoam, plastics (even food containers), rubber and carpet.

Q: It smells like it might be dangerous, is it?

R: Styrene is dangerous in very high concentrations but can be detected by our nose at very low concentrations. It is nearly impossible to for it to reach a high enough concentration to be dangerous at the levels being released around our job site.

Q: When will the smell go away?

R: Our work normally takes place within a day's time. The smell should be gone from the outside area when we leave, other than some very slight odors possible coming from the manholes around the lines we worked on.

Q: I smell the styrene in my house/basement, is that normal?

R: No. If you smell styrene in your house or basement you have drain plumbing that is not working properly. It might be that the water traps in your drains are dried out, or that the traps aren't working. The level of styrene in your basement is probably not dangerous, but it is an indicator that you are likely getting sewer gas into your residence on a regular basis. Sewer gas has the potential to be very dangerous, so we recommend fixing the drain problems immediately. Ventilate the area to get rid of the smell and have a professional plumber inspect the drains.

Q: Can you check the level of styrene?

R: We do have a device for testing the level of styrene. While it is highly unlikely that there are dangerous levels in your residence, we can perform a test to determine the actual level. The tests give instant results but do have a cost, so we prefer to only test one area within a residence.

Exposure Levels & Regulatory Ratings

.1 ppm – Detectable by smell

40 ppm – Voluntarily imposed limit for safe working without protective respirators

100 ppm – OSHA permissible exposure limit, averaged over 8 hours

200ppm – OSHA permissible exposure limit, short term exposure

600ppm – OSHA maximum exposure limit, 5 minutes period within any 3-hour time

900,000ppm – Concentration required for explosive combustion

NFPA Ratings (0 minimum – 4 maximum): Health – **2**, Flammability – **3**, Reactivity – **2**

PUBLIC NOTICE

YOUR SEWER IS BEING REPAIRED

Hoerr Construction, Inc. of Goodfield, Illinois has been contracted by your local municipality to rehabilitate the sanitary sewer main that serves your area. We will be installing a cured in place pipe liner into the existing sewer pipeline. This form of trenchless sewer rehabilitation is much quicker, safer, and more cost effective than traditional open cut sewer replacement methods. Please take the following precautions:

- There will be a temporary disruption of your sanitary services and because of this you will be asked to limit your use of the shower, laundry, toilet, and general water use. This disruption should not last longer than one workday. Other inconveniences may be traffic control to provide a safe work environment for our crew, noise from equipment, and odors from the resins used in the lining process.
- To prevent odors from entering your building pour a gallon of water into sinks, floor drains, or any other drainage opening, especially those that are rarely used such as basement sinks and floor drains. If you do detect a chemical odor, do not be alarmed, the level of concentration does not pose a health risk; simply ventilate the area with fresh air and/or fans until the odor dissipates. If the chemical smell persists, there is an open air connection to the sewer that does pose a health risk to you due to sewer gas entering your building; consult a plumbing professional to resolve this problem.
- Periodically, problems can be experienced where pressure in the sewer line forces water out of toilets and drains in homes. As a measure to keep this water contained and prevent any damage, we are asking residents to keep their toilets flushed, drape a towel over the rim and close the lid and seat onto the towel. Also cover basement floor drains.

The portion of sewer main that services your residence or business will be worked on * _____.
When you see the crew in your area you are requested to keep toilet, shower, laundry, and general water use to an absolute minimum.

*If your sump pump is improperly connected to the sanitary sewer, Hoerr Construction, Inc. & your local municipality are not responsible for any damages!

*If you have a sanitary manhole in your yard and you have a dog(s), please keep your dog(s) inside on the days we are working in your yard.

*This date may change due to inclement weather. If this happens, we will deliver a new flier with a revised date on it. We apologize in advance for any inconvenience. Thank you for your patience.

For questions or problems please contact:

Dan Wiegand – Cell Phone – (309) 208-5161

Mike Kaisner - Cell Phone - (309) 303-5664

YOUR LOCAL MUNICIPALITY AND HOERR CONSTRUCTION, INC. THANK YOU IN ADVANCE FOR YOUR COOPERATION ON THIS IMPORTANT PROJECT.